

## Product Image



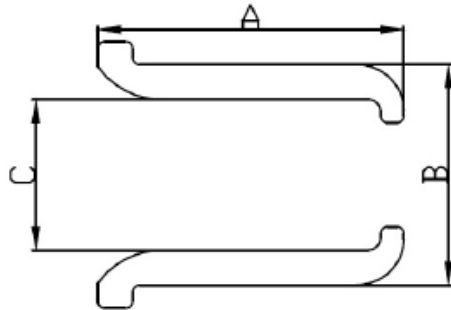
## Copper Crimp Sleeves

Copper crimp sleeves are used to group and terminate copper wires. Once installed, they provide a vibration resistant connection that is corrosion resistant.

Features:

- UL listed
- Solid copper
- 18 to 10 gauge wire
- 18 to 8 gauge wire

## Performance Data



PN#	Size	Wire Gauge	'A'	'B'	'C'
CS410	18-10	18-10 AWG	10.6	6.3	5.2
CS411	14-6	18-8 AWG	11.5	8.9	7.4